

LEROUGE

乐虹智能科技(浙江)有限公司

LEROUGE INTELLIGENT TECHNOLOGY (ZHEJIANG) CO., LTD.

地址: 浙江省湖州市南浔区富园路350号

邮箱: ximing.zhang@suolixi.com

Add: No.350, Fuyuan Road, Nanxun District, Huzhou City, Zhejiang Province

E-mail: ximing.zhang@suolixi.com

www.lerougetech.com



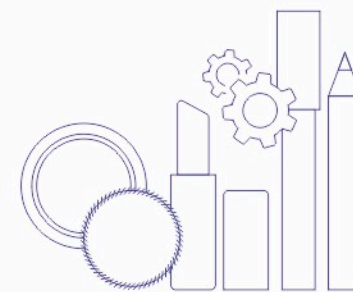
咨询热线

Enquiry hotline

0086-13915412605

LEROUGE
乐虹科技

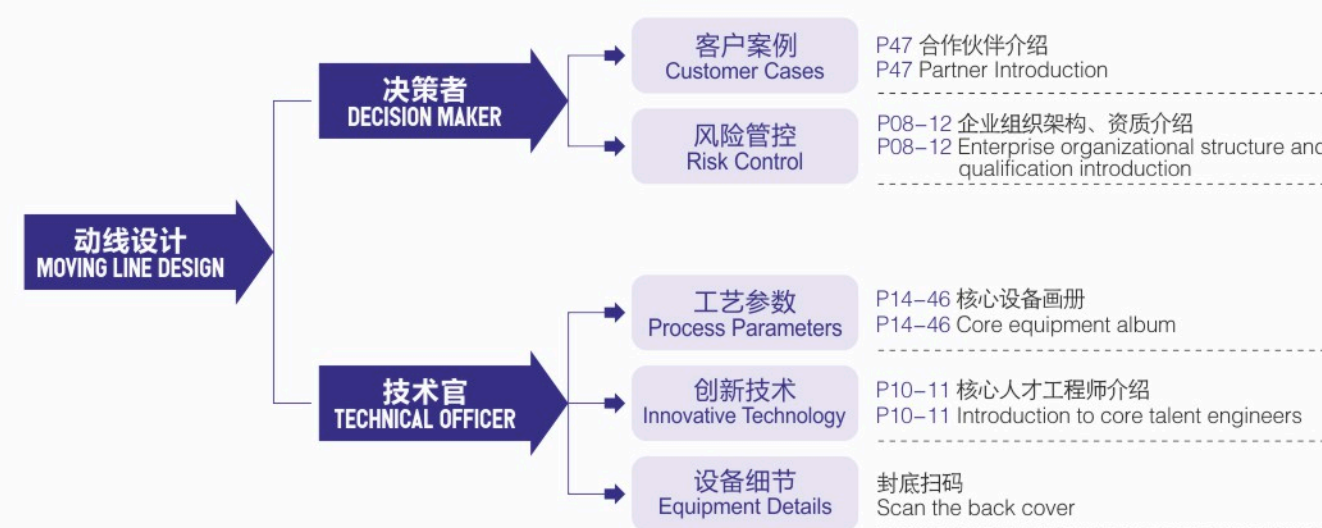
赋能全球美妆工厂高效智造
Empowering Global Cosmetic Manufacturing



Since **2014**

目录 CONTENT

04 公司介绍 Company introduction	33 六头灌装机 6-Head filling machine
06 公司历程 Company history	34 多模式压粉机 Multi-mode powder press machine
08 公司荣誉与专利 Company honors and patents	35 散粉灌装机 Loose powder filling machine
10 团队管理 Team management	36 笔芯灌装机 Pen core filling machine
12 制造与质量管理 Manufacturing and quality management	37 套笔帽机 Pen cap machine
14 散粉自动生产线 Loose powder automatic production line	38 香水灌装机 Perfume filling machine
16 粉饼组装机 Automatic pressed powder assembly line	39 自动旋盖机 Automatic capping machine
18 热灌装自动生产线 Hot filling automatic production line	40 自动套膜机 Automatic sleeving machine
20 气垫自动生产线 Air cushion automatic production line	41 铝箔封口机 Aluminum foil sealing machine
22 卸妆膏高速灌装线 Makeup removing balm high-speed filling line	42 小单机设备系列 Small single equipment series
24 高速唇釉灌装线 High-speed lip glaze filling line	42 自动化供料岛系列 Automated feeding island series
26 多模式柔性口红机 Multi-mode flexible lipstick machine	43 实验室设备 Laboratory equipment
27 多模式柔性高速口红机 Multi-mode flexible high-speed lipstick filling machine	44 口红模具 Lipstick mold
28 双头气垫转盘灌装机 Double-head air cushion rotary filling machine	45 硅胶模具 Silicone mold
29 四头气垫环形灌装机 Four-head air cushion ring filling machine	45 压粉模具 Powder pressing mold
30 唇彩&唇釉灌装机 Lip gloss & lip glaze filling machine	46 笔类模具 Pencil mold
31 十二孔灌装机 12-head filling machine	47 合作客户 Our customers
32 在线热灌装机 Online hot filling machine	



企业使命 MISSION

赋能全球美妆工厂高效智造
Empowering Global
Cosmetic Manufacturing

企业愿景 VISION

驱动美妆工厂加速迈入智造时代
Drive Beauty Factories To Accelerate Into
The Intelligent Manufacturing Era

价值观 VALUES

热爱、坚韧、共赢
Passion, Resilience, Synergy

公司介绍
COMPANY INTRODUCTION

01

创立
FOUNDED

始创于2014年，乐虹源于法语Lerouge的音译。

Lerouge, transliteration from a french phrase "Le Rouge", was founded in 2014.

02

领域
SCOPE

美妆通用机型&非标定制机型。

Standard and customized machines and molds for cosmetics manufacturing.

03

优势
ADVANTAGE

致力于将传统的美妆制造工艺与自动化技术相结合。

Dedicated to integrating traditional cosmetic manufacturing process with advanced automation technology.



12000

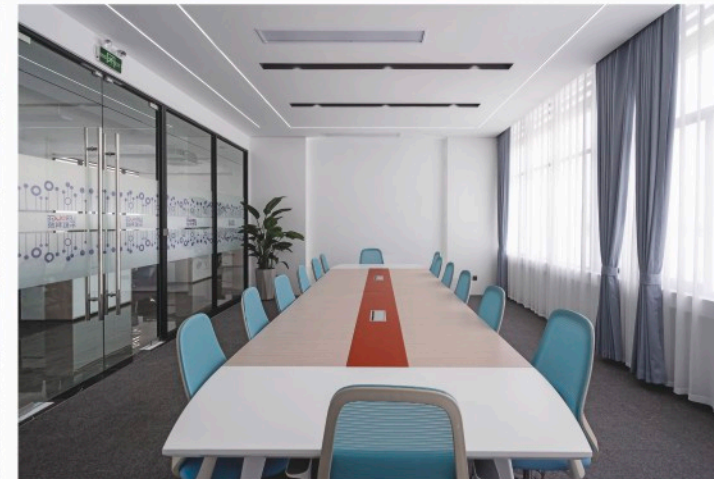
公司总投资12000万
Total investment of 120 million

19000

公司占地面积约19000平方米
Total land area of 19,000m²

1200

研发投入1200万
R&D investment 12 million



公司历程
COMPANY HISTORY



公司荣誉与专利 COMPANY HONORS AND PATENTS

2020

入选湖州市“南太湖精英计划”领军型创新创业团队。
Selected as a leading innovative and entrepreneurial team under Huzhou's "South Taihu Lake Elite Program".

2021

创始人获浙江南浔经济开发区“科技创新人才奖”。
The founder was awarded the Science and Technology Innovation Talent Award by Zhejiang Nanxun Economic Development Zone.

2022

荣膺国家级高新技术企业。
Awarded the title of National High-tech Enterprise.

2023

获中国人社部留学人员创业启动支持计划“优秀项目”。
Won the "Excellent Project" of the Returnee Entrepreneurship Startup Support Program issued by the Ministry of Human Resources and Social Security of China.

2024

获评共青团湖州市委“湖州市青年安全生产示范岗”；
被认定为湖州市级科技企业研究开发中心。
Rated as Huzhou Youth Work Safety Demonstration Post by the Communist Youth League Huzhou Municipal Committee.
Recognized as Huzhou Municipal Science and Technology Enterprise Research and Development Center

2025

获评南浔经济开发区招才引智先锋企业。
Rated as a Pioneer Enterprise for Talent Introduction of Nanxun Economic Development Zone.



作为全球美妆行业领导者如迪奥、欧莱雅、巴斯夫、莹特丽等公司的合作伙伴，乐虹科技的产品赢得了市场的广泛信赖，拥有77项专利，其中包括4项发明专利和73项实用新型专利。

As a partner of global beauty industry leaders such as Dior, L'Oréal, BASF, Intercos and other companies, Lerouge Technology's products have won widespread trust in the market and have 77 patents, including 4 invention patents and 73 practical patents. New patent.





团队管理 TEAM MANAGEMENT

乐虹团队是由一群对美妆和智能装备充满热情的追梦青年组成，基于对美妆生产工艺的深刻理解，为美妆工厂提供包括蜡基单元，粉类单元(压粉&散粉)，笔类单元，轻彩妆单元(气垫&卸妆膏)灌包的全栈解决方案。

Lerouge Team is a collective of visionary young professionals fueled by a passion for beauty and intelligent equipment. Leveraging our deep-seated expertise in cosmetic manufacturing process, we provide beauty factories with full-stack filling and packaging solutions covering wax-based unit, powder unit (press powder & loose powder), pencil unit, and light makeup unit (air cushion & cleansing balm).



10

10位机械设计工程师
10 mechanical design engineers

7

7位电气设计工程师
7 electrical design engineers

7

7位现场调试工程师
7 field commissioning engineers

15

15位机加工技师
15 machining technicians

制造与质量管理 MANUFACTURING AND QUALITY MANAGEMENT

作为中国美妆设备的领军企业，乐虹科技致力于将传统的美妆生产工艺和自动化技术相结合，为美妆工厂提供智能化，柔性化，标准化的全栈式美妆制造解决方案。公司占地面积近2万平方米，设有先进的工程与研发中心，机加工车间，钣金车间，硅胶车间和装配&调试车间，保证从研发到生产的每一个环节都精益求精。

As a leader in China's beauty equipment industry, Lerouge Technology is dedicated to the seamless integration of traditional cosmetic manufacturing process with advanced automation. We provide beauty manufacturers with intelligent, flexible, and standardized full-stack solutions. Our expansive facility spans nearly 20,000m², housing a cutting-edge R&D center alongside specialized workshops for machining, sheet metal, silicone, and assembly. This integrated infrastructure ensures that every stage—from initial research to final calibration—adheres to the highest standards of precision and excellence.

可提供机械/电气设计, 机械加工, 钣金加工, 硅胶加工, 装配/调试等全栈解决方案

PROVIDE TURNKEY SOLUTIONS FOR MECHANICAL / ELECTRICAL DESIGN, MACHINING, SHEET METAL PROCESSING, SILICONE PROCESSING, ASSEMBLY / COMMISSIONING



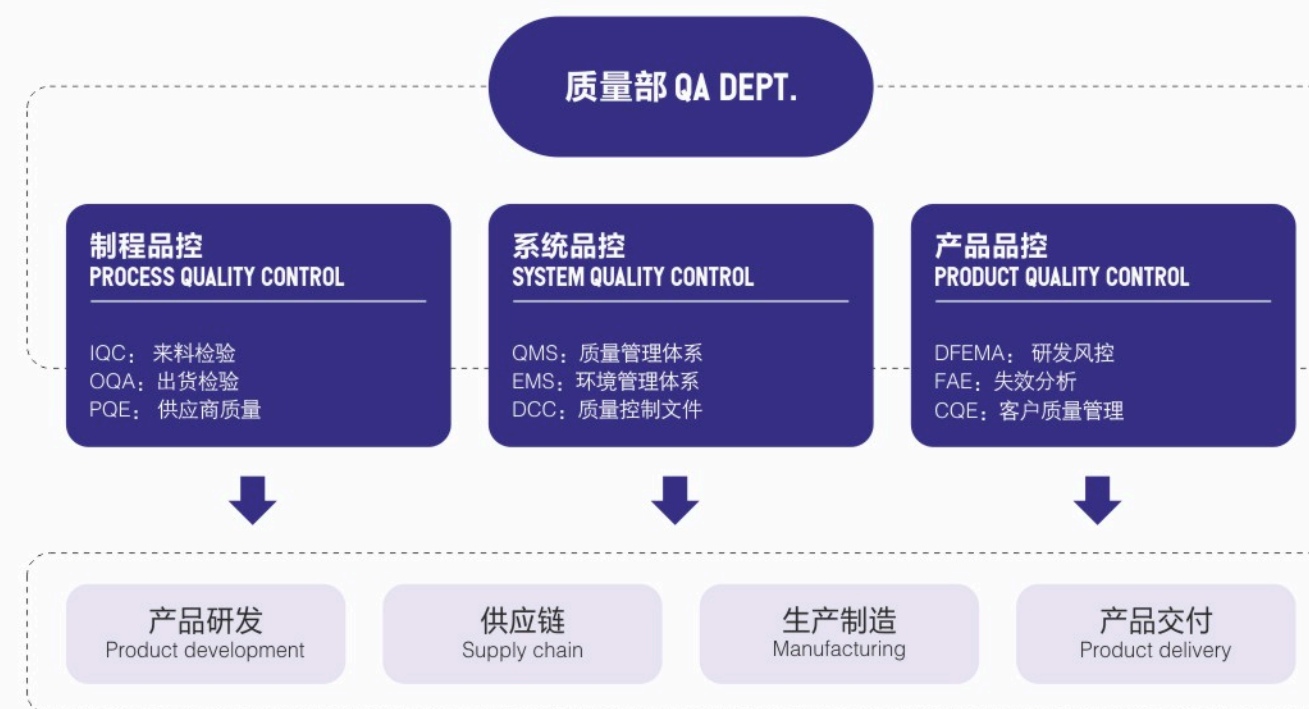
CUSTOMER-ORIENTED SOLUTIONS

提供以客户为导向的解决方案

乐虹科技



质量管理体系 QUALITY MANAGEMENT SYSTEM



散粉自动生产线 LOOSE POWDER AUTOMATIC PRODUCTION LINE

功能 Function

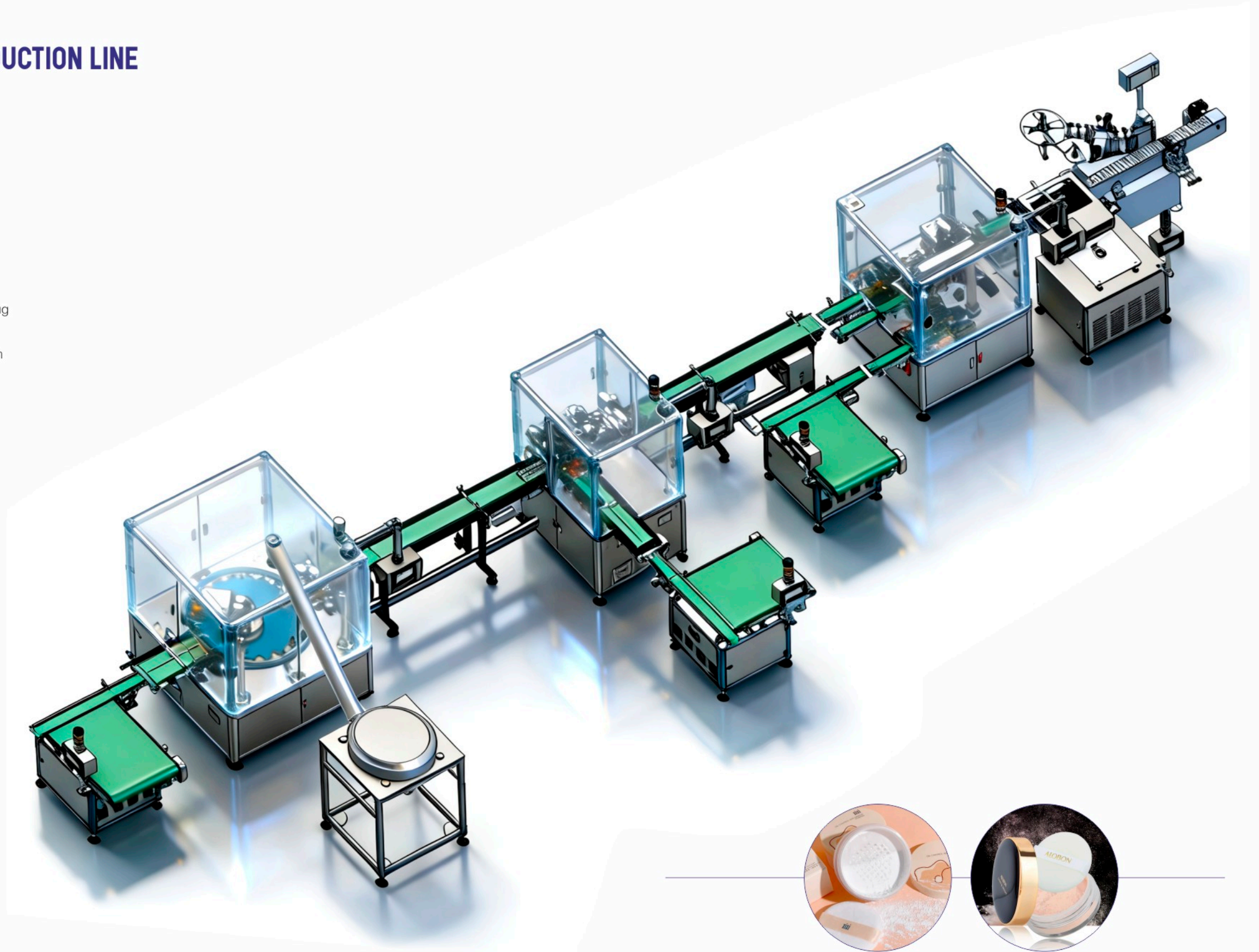
- ◆适用产品：散粉；
- ◆用途：灌装&组装；
- ◆工序：自动供瓶、灌装、抖动、自动供内塞、自动压内塞、自动供外盖、自动旋盖、静电除尘、贴标等；
- ◆优势：打通生产前段至后段，实现全链条自动化。
- ◆Applicable product: Loose powder.
- ◆Use: Filling and packaging.
- ◆Process: Automatic bottle supply, filling, shaking, automatic inner plug supply, automatic inner plug pressing, automatic outer cap supply, automatic capping, electrostatic precipitator, labeling, etc
- ◆Advantage: Innovative visual positioning ensures full automation from the beginning to the end of production.

机械特点 Technical Features

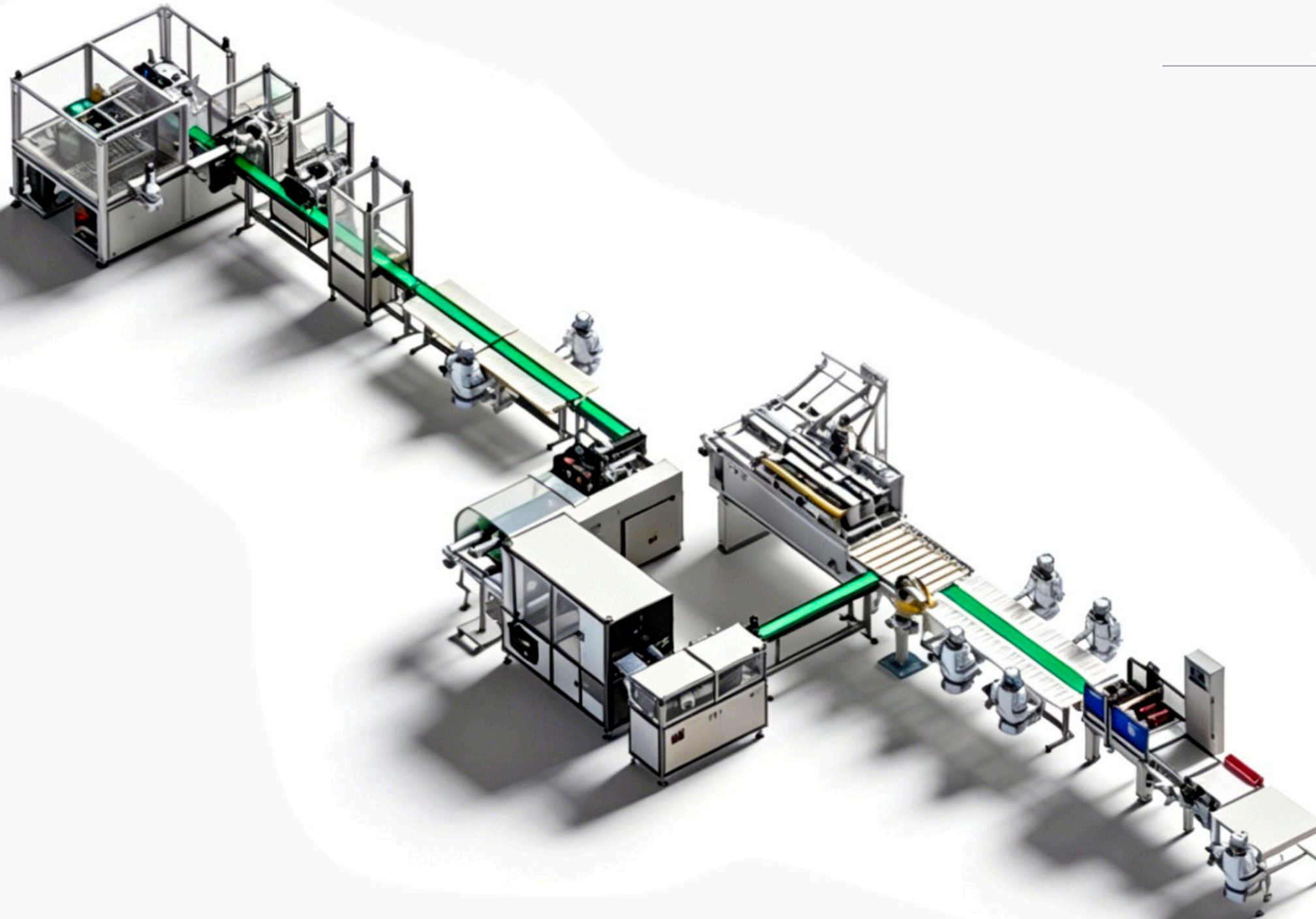
- ◆操作人员：2人
- ◆节拍：36-42pcs/min
- ◆电源：AC 380V 50/60Hz
- ◆功率：12kW
- ◆尺寸：L11000 × W1500 × H1850mm
- ◆气压：0.6Mpa
- ◆灌装量：5-20g
- ◆灌装精度：±0.2g
- ◆Number of operators: Two person
- ◆Production Capacity: 36-42pcs/min
- ◆Power supply: AC 380V 50/60Hz
- ◆Power: 12KW
- ◆Size: L11000 × W1500 × H1850mm
- ◆Atmospheric pressure: 0.6Mpa
- ◆Filling volume: 5-20g
- ◆Filling accuracy: ±0.2g

元器件信息 Key Components

- ◆伺服电机：Inovance
- ◆调速电机：Jingyan
- ◆传感器：Keyence/Omron
- ◆电气元件：SMC/Schneider
- ◆控制元件PLC：Inovance
- ◆Servo motor: Inovance
- ◆Speed control motor: Jingyan
- ◆Sensor: Keyence/Omron
- ◆Electrical Components: SMC/Schneider
- ◆Control PLC: Inovance



粉饼组装线 AUTOMATIC PRESSED POWDER ASSEMBLY LINE



功能 Function

- ◆ 适用产品：全栈粉块组装线；
- ◆ 功能：供镜盒、开盖、点胶、贴标、组粉、检测、装盒、读码、烟包、称重、装箱码垛；
- ◆ 操作人员：7-8人
- ◆ 工作节拍：40pcs/min
- ◆ Applicable: Full-Stack pressed powder assembly Line.
- ◆ Functions: Feeding mirror box, Open cap, Dispense gel, Labeling, Fill powder, Testing, Box packing, Reading code, Film wrapping, Weighing, Palletize
- ◆ Operators: 7-8 person
- ◆ Takt time: 40pcs/min

参数 Data

- ◆ 尺寸：22000*3400*1600mm
- ◆ 产能：34-40pcs/Min
- ◆ 电源：AC 220V-50-60HZ
- ◆ Size: 22000*3400*1600mm
- ◆ Capacity: 34-40pcs/Min
- ◆ Power supply: AC 220V-50-60HZ

热灌装自动生产线 HOT FILLING AUTOMATIC PRODUCTION LINE



功能 Function

- ◆适用产品：卸妆膏、除甲醛凝胶、芳香剂等；
- ◆用途：用于蜡基类产品入盒前的自动化生产；
- ◆工序：灌装、冷冻、反熔、供盖、预旋&旋盖、贴标等；
- ◆优势：解决了蜡基类产品生产过程中脱壁、干裂的核心痛点，效果平整均匀无气泡。

机械特点 Technical Features

- ◆双头灌装
- ◆操作人员：1-2人
- ◆节拍：40-44pcs/min
- ◆电源：AC 380V 50/60Hz
- ◆功率：12kW
- ◆气压：0.6Mpa
- ◆尺寸：L14730 × W2150 × H1850mm
- ◆灌装量：5-200g(可定制)
- ◆灌装精度：± 1g/100g

元器件信息 Key Components

- ◆伺服电机：Inovance
- ◆调速电机：Jingyan
- ◆传感器：Keyence
- ◆电气元件：SMC/Schneider Electric/Airtac
- ◆控制元件PLC：Inovance

- ◆Applicable Product: Such as cleansing balm, formaldehyde removal gel, and fragrance.
- ◆Use: For the automation production before the wax-based products are boxed.
- ◆Production processes: Filling, freezing, reverse melting, feeding caps, pre-screwing and screwing, labeling.
- ◆Advantage: It solves the core issues of wall stripping and cracking during cream filling, ensuring a smooth and uniform result without bubbles.

- ◆Dual-head filling
- ◆Number of operators: one to two person
- ◆Production capacity: 40-44pcs/min
- ◆Power supply: AC 380V 50/60Hz
- ◆Power: 12KW
- ◆Atmospheric pressure: 0.6Mpa
- ◆Size: L14730 × W2150 × H1850mm
- ◆Filling volume: 5-200g(Customizable)
- ◆Filling accuracy: ± 1g/100g

- ◆Servo motor: Inovance
- ◆Speed control motor: Jingyan
- ◆Sensor: Keyence
- ◆Electrical components: SMC/Schneider Electric/Airtac
- ◆Control PLC: Inovance

气垫自动生产线 AIR CUSHION AUTOMATIC PRODUCTION LINE

功能 Function

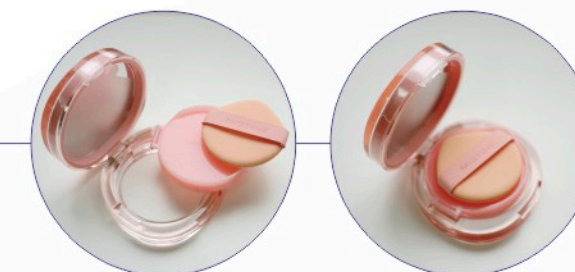
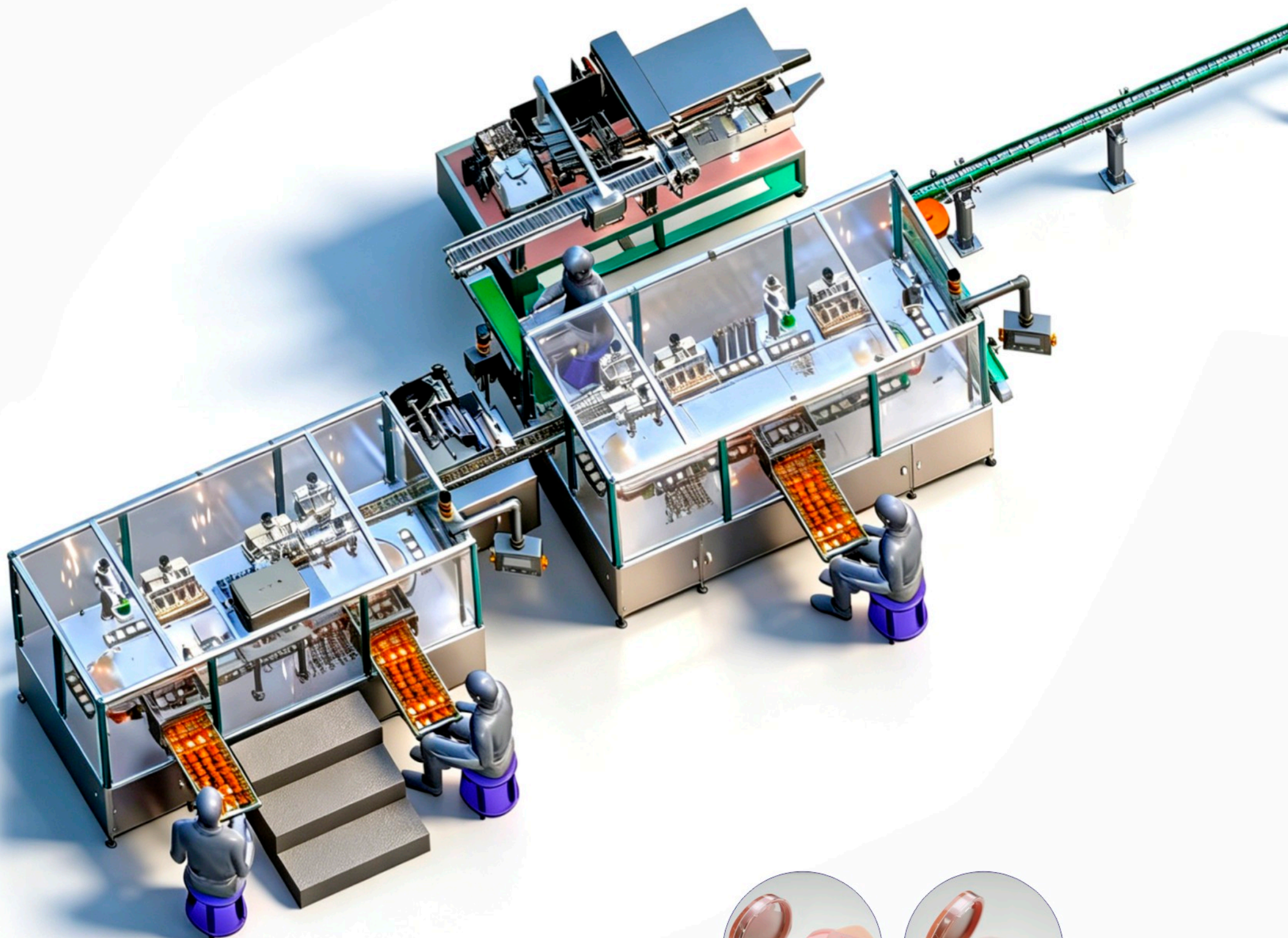
- ◆适用产品：气垫类产品；
- ◆用途：实现气垫从灌装、组装到成品的全站式自动化生产；
- ◆工序：灌装(拍打、压卡环、合盖)、镜盒开盖、组装、自动上粉扑、合盖、成品移出；
- ◆优势：全自动整线，提高人均能效，稳定性更高；可单机生产，也可联机生产。
- ◆Applicable product: Air cushion products.
- ◆Purpose: To achieve full station automated production of air cushions from filling, assembly to finished products.
- ◆Process: Filling (tapping, pressing the snap ring, closing the lid), opening the mirror box lid, assembling, automatic powder puff, closing the lid, and removing the finished product.
- ◆Advantage: Full-automatic production line, improve labor productivity, and higher stability. It can be produced offline, or online production can also be carried out.

机械特点 Technical Features

- ◆操作人员Number of operators: 2~3人 two~three people
- ◆节拍Production capacity: 36~40pcs/min
- ◆电源Power supply: AC 380V 50/60Hz
- ◆尺寸Size: L10000 × W3010 × H1950mm
- ◆灌装量Filling capacity: 5~20g
- ◆灌装精度Filling accuracy: ±0.2g
- ◆功率Power: 16kW
- ◆机身材料Body material:
SUS304+铝型材 SUS304+Aluminum profile
- ◆整机与物料接触部分contacted material:
不锈钢材料制成Made of stainless steel material
- ◆自制切换阀Self-made switching valve:
德国食品级S136材料German food-grade S136 material

元器件信息 Key Components

- ◆PLC: Inovance
- ◆人机界面Man-machine interface:
10-inch-Inovance
- ◆测物电眼Electrical eye measurement: Keyence
- ◆伺服电机Servo motor: Inovance
- ◆步进电机Stepper motor: Leisai
- ◆开关电源Switching power supply:
24V-6A-Meanwell
- ◆调速器(包括保险开关)Speed governor: Taibang
- ◆视觉Vision: Hikvision



卸妆膏高速灌装线 MAKEUP REMOVING BALM HIGH-SPEED FILLING LINE

功能 Function

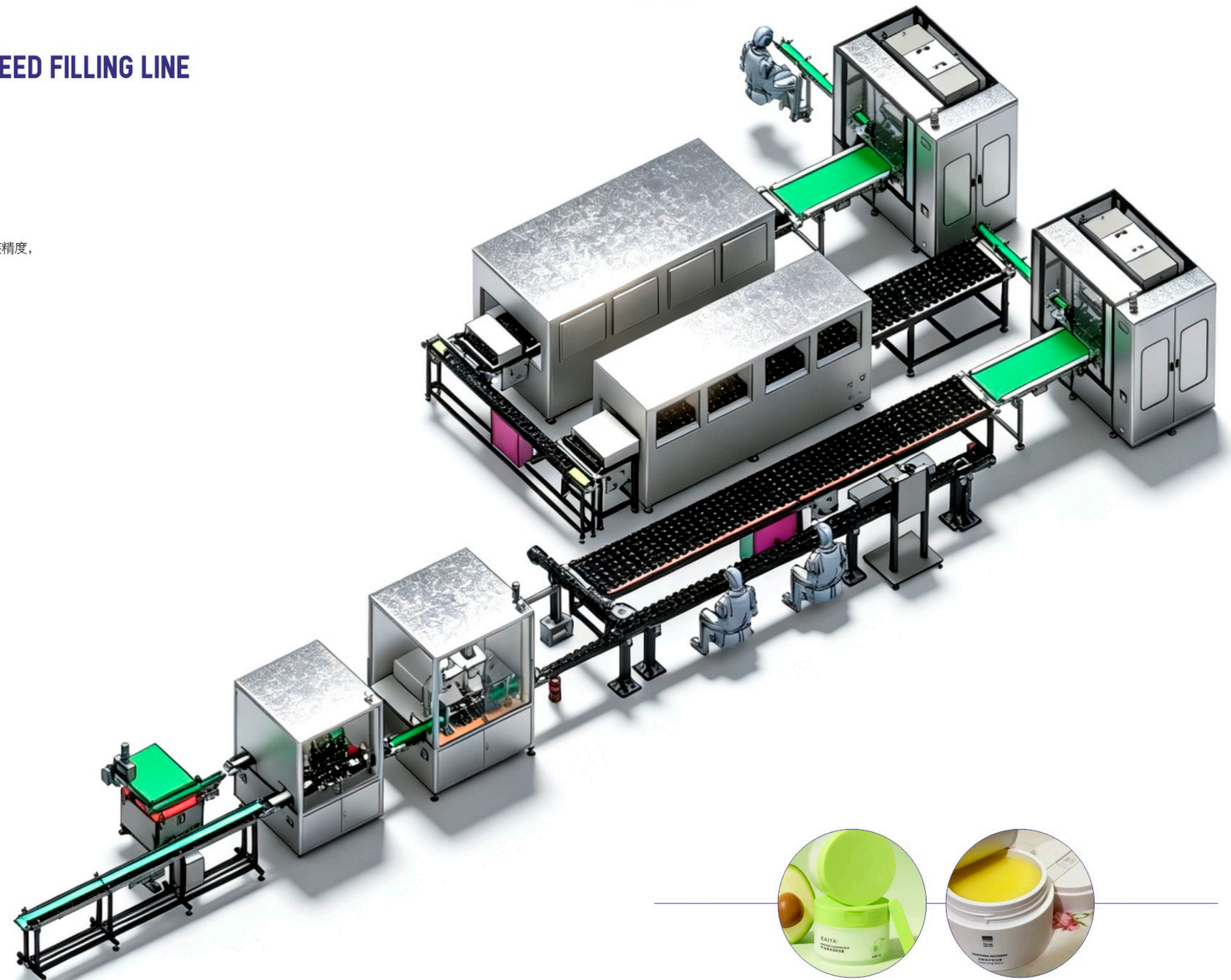
- ◆适用产品：卸妆膏、冷霜、凡士林等广口瓶包装产品；
- ◆用途：高速灌装；
- ◆工序：除尘、灌装、冷却、反熔等；
- ◆优势：灌装阀独立伺服控制，可任意调节每个针管灌装量，精准控制灌装精度，陶瓷片高精度反熔，灌装效果平整均匀，无气泡、无裂纹。
- ◆Applicable product: Makeup remover cream, cold cream, petroleum jelly, and other wide-mouth jar products.
- ◆Use: Automatic filling.
- ◆Production processes: Dust removal, filling, cooling, and reverse melting.
- ◆Advantage: The filling valve is independently servo controlled, which can adjust the filling amount of each needle tube arbitrarily and accurately control the filling accuracy. Ensure high precision and uniform filling without bubbles or cracks.

机械特点 Technical Features

- ◆六头灌装 Six head filling
- ◆操作人员Number of operators: 2人 Two people
- ◆节拍Production capacity: 40-60pcs/min
- ◆电源Power supply: AC 220V 50/60Hz
- ◆功率Power: 18kW
- ◆气压Power: 0.6Mpa
- ◆灌装量Filling volume: 5-150ml
- ◆灌装精度Filling accuracy: $\pm 1g/100g$
- ◆尺寸Size: L11000 x W2900 x H2100mm

元器件信息 Key Components

- ◆伺服电机Servo motor: Inovance
- ◆调速电机Speed control motor: Jingyan
- ◆传感器Sensor: Keyence
- ◆电气元件Electrical components: SMC/Schneider
- ◆控制元件PLC Control PLC: Inovance



高速唇釉灌装线 HIGH-SPEED LIP GLAZE FILLING LINE

功能 Function

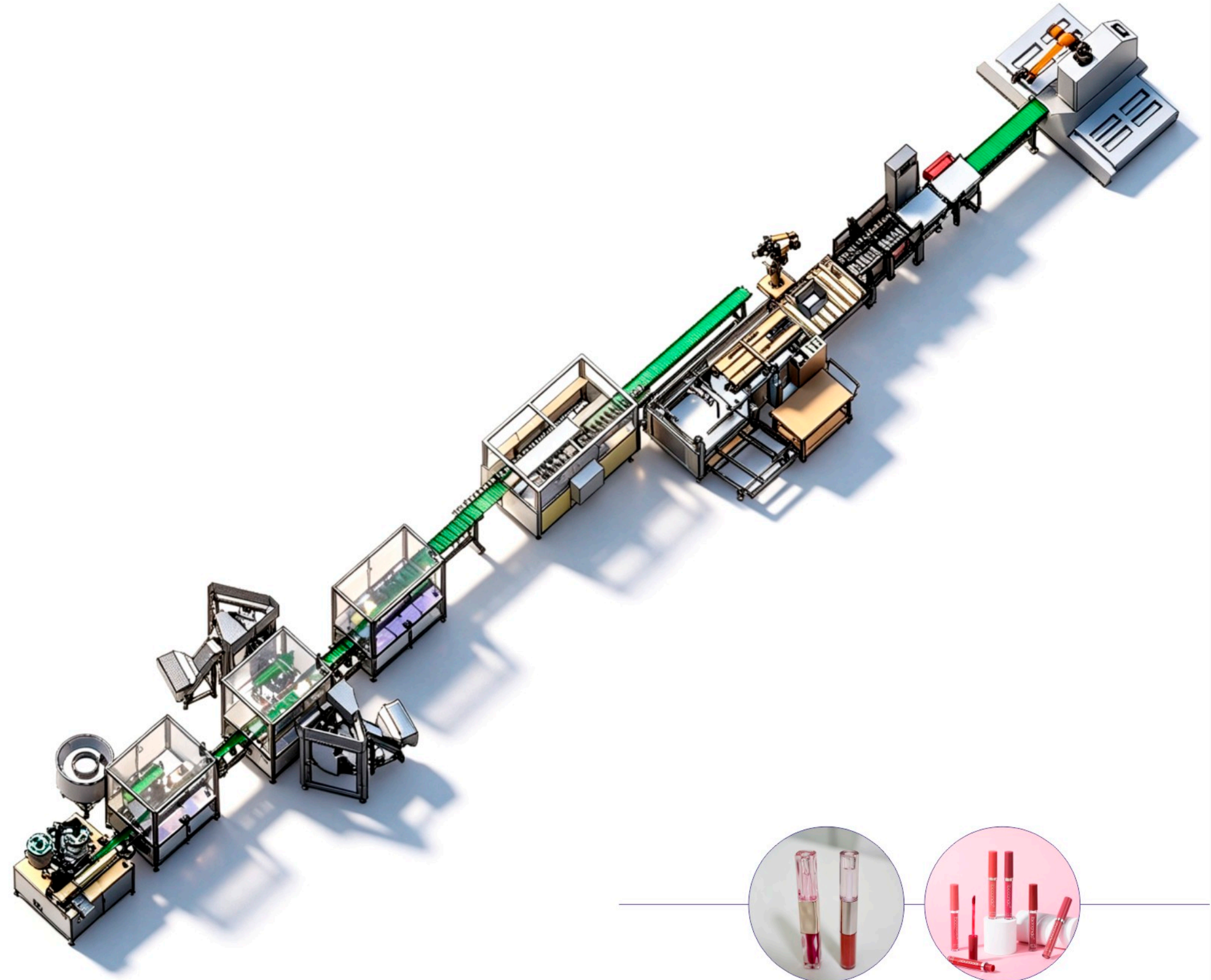
- ◆适用产品：唇釉；
- ◆用途：灌装、内塞组装、刷头旋盖、包装、码垛；
- ◆工序：自动上瓶、灌装、内塞组装、自动上刷头、刷头旋盖、底部激光打标、装花盒、装箱、自动码垛；
- ◆优势：用于唇釉产品大批量生产，实现从灌装、内塞组装、刷头旋盖，包装码垛一条线完成。
- ◆Applicable product: Lip glaze.
- ◆Purpose: Filling, inner plug assembly, brush head capping, packaging and palletizing.
- ◆Production processes: Automatic bottle feeding, filling, inner plug assembly, automatic brush head loading, brush head capping, bottom laser marking, box packing, carton packing, automatic palletizing.
- ◆Advantage: Designed for mass production of lip glaze products. It realizes one-stop inline operations including filling, inner plug assembly, brush head capping, packaging and palletizing.

机械特点 Technical Features

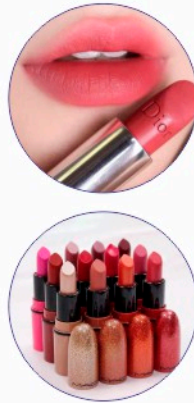
- ◆外形尺寸Dimension: L7400 x W2000 x H2130
- ◆生产节拍Production capacity: 60-84pcs/min
- ◆输送方式Conveying method:
皮带输送+杯托Belt conveyor with cup holders
- ◆适合包材尺寸Suitable packaging material size:
直径Diameter 15mm~20mm, 长度Length < 120mm
- ◆操作人员Operator: 2人 Two person
- ◆灌装量Filling volume: < 16ml
- ◆灌装精度Filling accuracy: $\pm 0.2\text{mL}$

元器件信息 Key Components

- ◆PLC(可编程控制器)PLC (Programmable logic controller): Inovance
- ◆触摸屏Touch screen: Inovance
- ◆伺服电机+驱动器Servo motor + driver: Inovance
- ◆调速电机Speed-regulating motor: Jingyan
- ◆光电传感器Photoelectric sensor: Keyence
- ◆三色警示灯Three-color warning light: Onn
- ◆断路器/接触器/继电器Circuit breaker/contactor/relay: Schneider



多模式柔性口红机 MULTI-MODE FLEXIBLE LIPSTICK MACHINE



功能 Function

- ◆适用产品: 鸟嘴、斜口、圆形、迷你口红; 腮红棒、香膏棒、遮瑕棒等产品;
- ◆用途: 灌装&脱模;
- ◆工序: 预热、灌装、反融、冷却、入芯脱模等;
- ◆优势: 机械手脱模为专利设计, 柔性高, 打造定制化、多元化的智能生产方案。

- ◆Applicable product: Bullet-shaped, slanted tip, round, and mini lipsticks; lip balm, perfume sticks, sunscreen sticks, and other stick-shaped products.
- ◆Use: Filling & Demoulding.
- ◆Process: Preheating, Filling, Remelting, Cooling, Core Insertion, and Demolding.
- ◆Advantage: The robotic arm demolding is a patented design, creating customization and diversification.

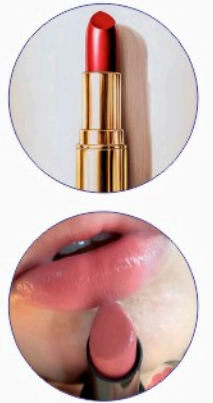
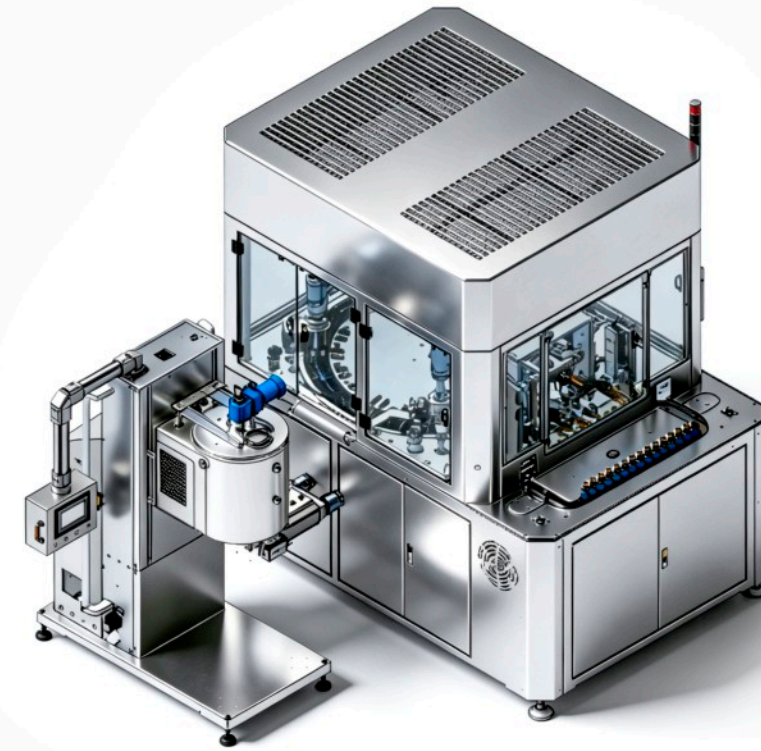
机械特点 Technical Features

- ◆操作人员Number of operators: 1人 one people
- ◆节拍Production capacity: 8pcs/min
- ◆电源Power supply: AC 380V/ 50-60Hz
- ◆功率Power: 5.5kW
- ◆气压Atmospheric pressure: 0.6Mpa
- ◆冷却温度Cooling temperature: -20°C
- ◆尺寸Size: L1600 x W1200 x H1900mm

元器件信息 Key Components

- ◆伺服电机Servo motor: Inovance
- ◆调速电机Speed control motor: Jingyan
- ◆传感器Sensor: Keyence
- ◆电气元件Electrical Components: SMC/Schneider
- ◆控制元件PLC Control PLC: Inovance
- ◆机械手Robotic arm: Inovance
- ◆温控模块Temperature module: Xianda

多模式柔性高速口红机 MULTI-MODE FLEXIBLE HIGH-SPEED LIPSTICK FILLING MACHINE



功能 Function

- ◆适用产品: 鸟嘴、斜口、圆形、迷你口红; 腮红棒、香膏棒、遮瑕棒等产品;
- ◆用途: 灌装&脱模;
- ◆工序: 预热、灌装、反融、冷却、入芯脱模等;
- ◆优势: 机械手脱模为专利设计, 柔性高, 打造定制化、多元化的智能生产方案。占地面积小, 人均能效高。

- ◆Applicable product: Bullet-shaped, slanted tip, round, and mini lipsticks; lip balm, perfume sticks, sunscreen sticks, and other stick-shaped products.
- ◆Use: Filling & Demoulding.
- ◆Process: Preheating, Filling, Remelting, Cooling, Core Insertion, and Demolding.
- ◆Advantage: The robotic arm demolding is a patented design, creating customization and diversification. Small footprint and high per capita energy efficiency.

机械特点 Technical Features

- ◆双伺服灌装 Dual servo filling
- ◆操作人员Number of operators: 2人 Two people
- ◆节拍Production capacity: 25-30pcs/min
- ◆电源Power supply: AC 380V/ 50-60Hz
- ◆功率Power: 5.5kW
- ◆气压Atmospheric pressure: 0.6Mpa
- ◆冷却温度Cooling temperature: -20°C
- ◆料桶容量Bucket capacity: 20L
- ◆尺寸Size: L1750mm x W1400mm x H2025mm

元器件信息 Key Components

- ◆伺服电机Servo motor: Inovance
- ◆调速电机Speed control motor: Jingyan
- ◆传感器Sensor: Keyence
- ◆电气元件Electrical Components: SMC/Schneider
- ◆控制元件PLC Control PLC: Inovance
- ◆机械手Robotic arm: Inovance
- ◆温控模块Temperature module: Xianda

双头气垫转盘灌装机 DOUBLE-HEAD AIR CUSHION ROTARY FILLING MACHINE



功能 Function

- ◆适用产品: 气垫类产品;
- ◆用途: 灌装;
- ◆工序: 自动灌装、自动拍打、压卡环、成品取出;
- ◆优势: 灌装高密&NBR海绵, 可灌装高粘度料体, 可调节杯托, 便于换产; 灌装均匀, 无溢出无白边; 卡环平整, 无鼓包; 产能高。

- ◆Applicable Product: air cushion products.
- ◆Purpose: Filling.
- ◆Process: Automatic filling, automatic tapping, clamping ring pressing, finished product extraction.
- ◆Advantages: Filling high-density & NBR sponge, can fill high viscosity materials, adjustable cup holder, easy to change production; Fill evenly, without overflow or white edges; The snap ring is flat and free of bulges; High production capacity.

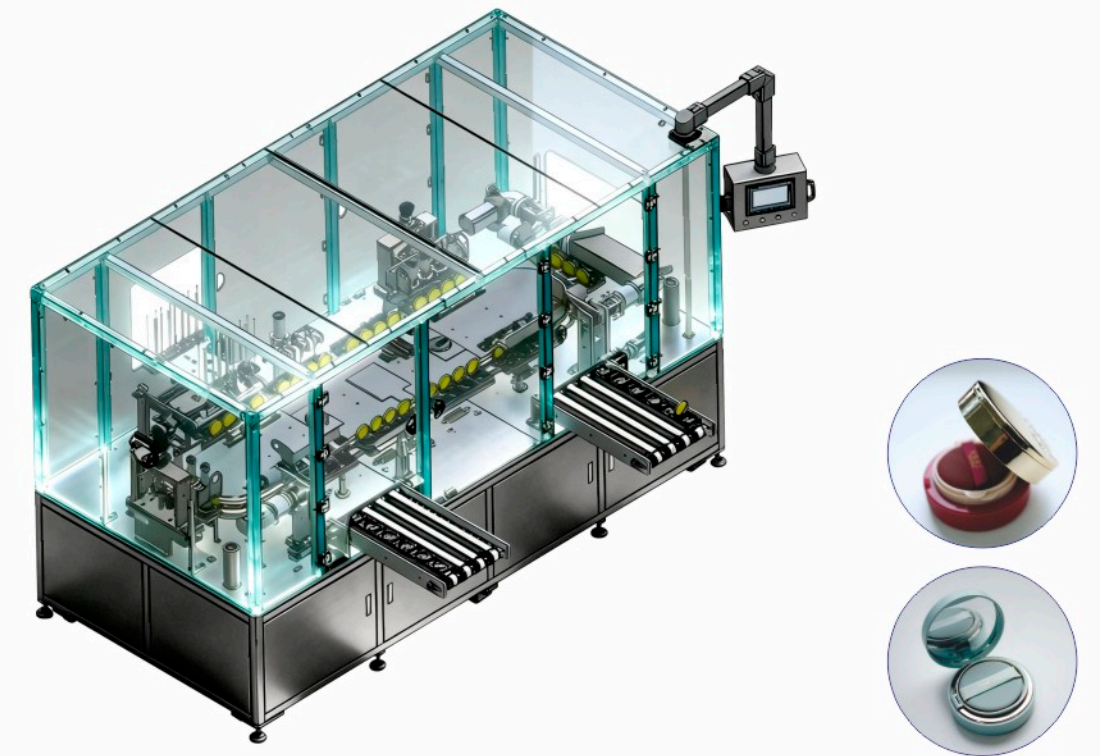
机械特点 Technical Features

- ◆双头灌装Dual-head filling
- ◆操作人员Number of operators: 2人 Two people
- ◆节拍Production capacity: 16-20pcs/min
- ◆电源Power supply: AC 220V/50-60Hz
- ◆功率Power: 5kW
- ◆气压Air pressure: 0.6Mpa
- ◆尺寸Size: L2700 x W1240 x H1900mm
- ◆灌装精度Filling accuracy: $\pm 0.2g$

元器件信息 Key Components

- ◆伺服电机Servo motor: Inovance
- ◆传感器Sensor: Keyence
- ◆电气元件Electrical components: SMC/Schneider Electric/Airtac
- ◆控制元件PLC Control PLC: Inovance

四头气垫环形灌装机 FOUR-HEAD AIR CUSHION RING FILLING MACHINE



功能 Function

- ◆适用产品: 气垫类产品;
- ◆用途: 灌装;
- ◆工序: 自动灌装、自动拍打、压卡环、成品取出;
- ◆优势: 灌装高密&NBR海绵, 可灌装高粘度料体, 可调节杯托, 便于换产; 灌装均匀, 无溢出无白边; 卡环平整, 无鼓包; 产能高。

- ◆Applicable Product: air cushion products.
- ◆Purpose: Filling.
- ◆Process: automatic filling, automatic tapping, clamping ring pressing, finished product extraction.
- ◆Advantage: Filling high-density & NBR sponge, can fill high viscosity materials, adjustable cup holder, easy to change production; Fill evenly, without overflow or white edges; The snap ring is flat and free of bulges; High production capacity.

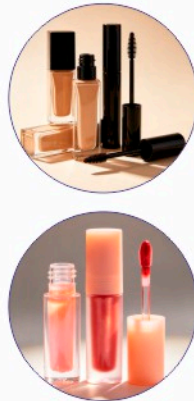
机械特点 Technical Features

- ◆四头灌装Four-head filling
- ◆操作人员Number of operators: 2人 Two people
- ◆节拍Production capacity: 36-40pcs/min
- ◆电源Power supply: AC 380V/50-60Hz
- ◆功率Power: 6kW
- ◆气压Air pressure: 0.6Mpa
- ◆尺寸Size: L2700 x W1240 x H1900mm
- ◆灌装量Filling volume: 5-20g
- ◆灌装精度Filling accuracy: $\pm 0.2g$

元器件信息 Key Components

- ◆伺服电机Servo motor: Inovance
- ◆调速电机Speed control motor: Jingyan
- ◆传感器Sensor: Keyence
- ◆电气元件 Electrical components: SMC/Schneider Electric/Airtac
- ◆控制元件PLC Control PLC: Inovance

唇彩&唇釉灌装机 LIP GLOSS & LIP GLAZE FILLING MACHINE



功能 Function

- ◆适用产品：粉底液、唇彩、唇釉、睫毛膏
- ◆用途：灌装&组装
- ◆工序：静电除尘、灌装、压内塞、旋盖、脱模
- ◆优势：配有可加压加热的料桶，伺服控制活塞阀精准灌装，可选配旋转灌装功能，设备小巧，灵活周转

- ◆Applicable products: liquid foundation, lip gloss, lip glaze, mascara
- ◆Purpose: Filling & Assembly
- ◆Process: electrostatic precipitator, filling, internal plug pressing, capping, demolding
- ◆Advantages: Equipped with an external material barrel that can be pressurized and heated, servo controlled piston valve for precise filling, optional rotary filling function, compact equipment, flexible turnover

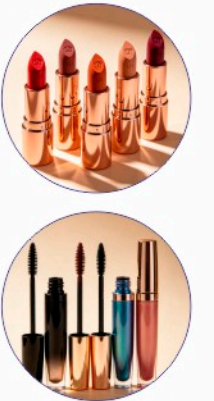
机械特点 Technical Features

- ◆双头灌装Dual-head filling
- ◆操作人员Number of operators: 2~3人 two~three people
- ◆节拍Production capacity: 32~40pcs/min
- ◆电源Power supply: AC 220V/50~60Hz
- ◆尺寸Size: L950 × W800 × H1950mm
- ◆灌装桶Filling barrel: 10L
- ◆功率Power: 5kW
- ◆气压Air pressure: 0.4~0.6Mpa

元器件信息 Key Components

- ◆伺服电机Servo motor: Inovance
- ◆调速电机Speed control motor: Jingyan
- ◆传感器Sensor: Keyence/Omron
- ◆电气元件Electrical components: SMC/Schneider
- ◆控制元件PLC Control PLC: Inovance/Siemens

十二孔灌装机 12-HEAD FILLING MACHINE



功能 Function

- ◆适用产品：口红、唇釉、睫毛膏
- ◆用途：灌装
- ◆工序：进料、预热、升降灌装、出料
- ◆优势：自动唇釉灌装，一次灌装十二支；带可切换的双料桶，减少停机时间；料桶带搅拌功能，真空抽吸功能；带包材热风预热功能。

- ◆Applicable products: Lipstick, lip glaze, mascara
- ◆Purpose: Filling
- ◆Process: Feeding, preheating, lifting filling, discharging
- ◆Advantages: Automatic filling for lip glaze with 12 pieces filled in one cycle; Equipped with switchable dual material tanks to minimize downtime; Material tank come with stirring and vacuum suction functions; Built-in hot air preheating function for containers.

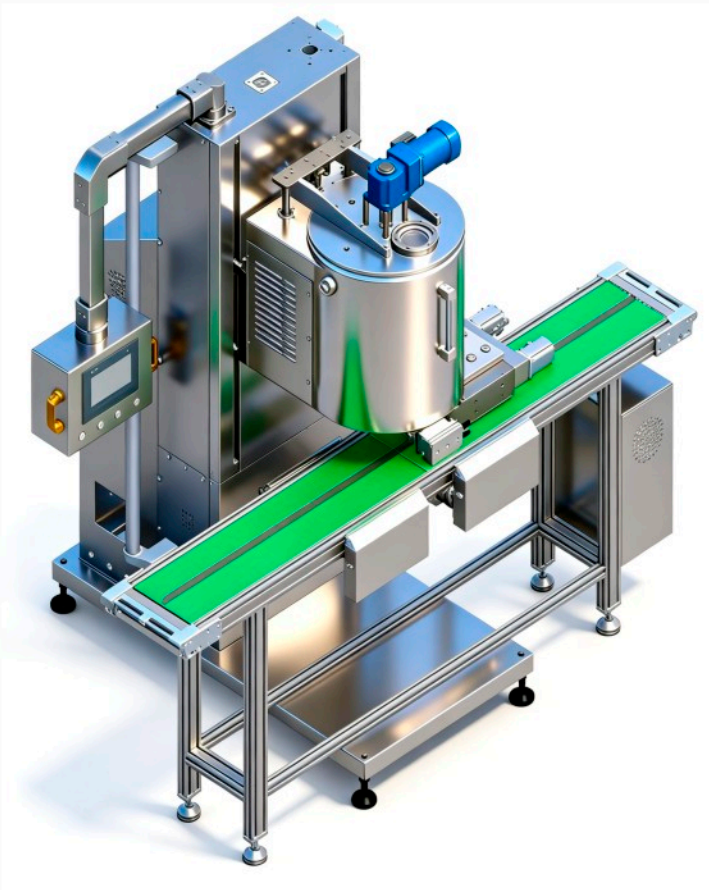
机械特点 Technical Features

- ◆外形尺寸Dimension: L1460 × W1300 × H2130
- ◆生产节拍Production capacity: 60~84pcs/min
- ◆料桶容积Material barrel capacity: 20L × 2pcs
- ◆灌装量Filling volume: 1~16mL
- ◆灌装精度Filling accuracy: ±0.2mL
- ◆灌装方式Filling method: 伺服定量缸灌装 Servo dosing cylinder filling

元器件信息 Key Components

- ◆PLC(可编程控制器)PLC (Programmable logic controller): Inovance
- ◆触摸屏Touch screen: Inovance
- ◆伺服电机+驱动器Servo motor + driver: Inovance
- ◆调速电机Speed-regulating motor: Jingyan
- ◆光电传感器Photoelectric sensor: Keyence
- ◆三色警示灯Three-color warning light: Onn
- ◆断路器/接触器/继电器Circuit breaker/contactor/relay: Schneider

在线热灌装机 ONLINE HOT FILLING MACHINE



功能 Function

- ◆适用产品: 各种需要加热灌装产品
- ◆用途: 灌装
- ◆工序: 料体加热、搅拌、自动灌装
- ◆优势: 双头双伺服独立控制, 灌装精度高, 料桶可自动升降, 触摸屏和PLC操作系统控制桶盖自动升降; 配合双轨道单独控制输送带, 保证生产节拍

- ◆Applicable products: various products that need to be heated and filled;
- ◆Purpose: filling;
- ◆Process: material heating, stirring, automatic filling;
- ◆Advantages: double-head double servo independent control, high filling accuracy, the material barrel can be automatically lifted, touch screen and PLC operating system control the automatic lifting of the barrel cover, Cooperate with the double-track separate control conveyor line to ensure the production rhythm.

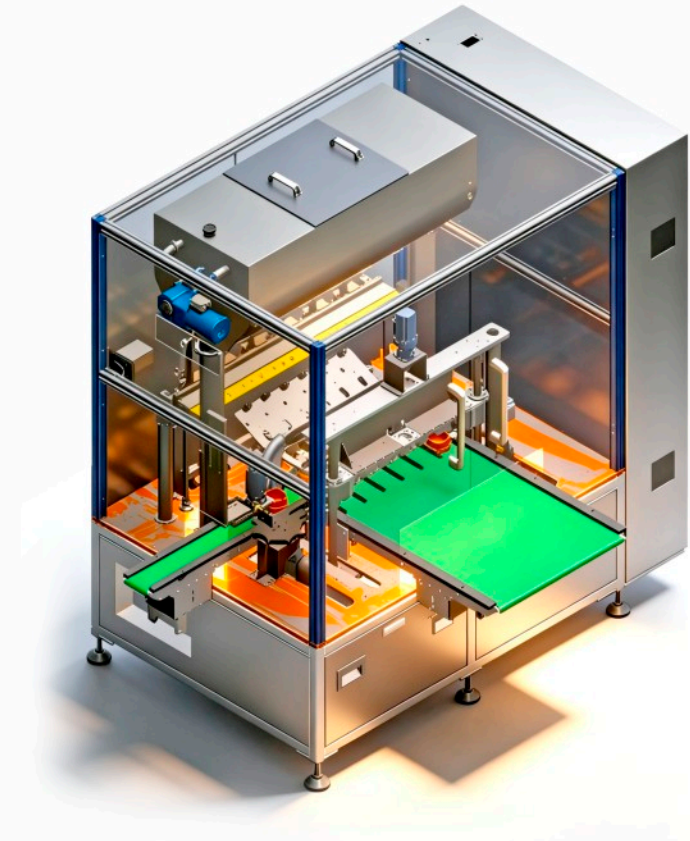
机械特点 Technical Features

- ◆双头灌装Double head filling
- ◆操作人员Number of operators: 1人 one people
- ◆节拍Production capacity: 35~40pcs/min
- ◆电源Power supply: 380V50Hz
- ◆尺寸Size: L1050 × W680 × H1350mm
- ◆功率Power: 5.4kW
- ◆灌装精度Filling accuracy: ±0.2g/100g
- ◆灌装桶容量Filling bucket capacity: 25L
- ◆气压: 0.6Mpa

元器件信息 Key Components

- ◆伺服电机Servo motor: Inovance
- ◆调速电机Speed control Motor: Jingyan
- ◆光纤传感器Fiber optical sensor: Omron
- ◆电气元件Electrical components: SMC/Schneider Electric/Airtac
- ◆控制元件PLC Control PLC: Inovance

六头灌装机 6-HEAD FILLING MACHINE



功能 Function

- ◆适用产品: 蜡基和膏霜类美妆产品的定量灌装
- ◆用途: 灌装
- ◆工序: 上料、灌装
- ◆优势: 搭配精准的温控模块, 可实现常温和加热灌装。伺服电机和陶瓷转阀, 为灌装的精度提供保障。高柔性设计实现快速转产。

- ◆Applicable products: Quantitative filling for wax-based and cream-type beauty products.
- ◆Purpose: Filling
- ◆Process: Feeding, filling
- ◆Advantages: Equipped with precise temperature control modules to support both ambient and heated filling processes. Servo motors and ceramic rotary valves to ensure superior dosing accuracy and stability. High flexible design for rapid changeover

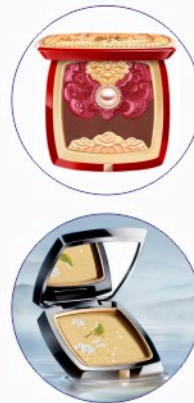
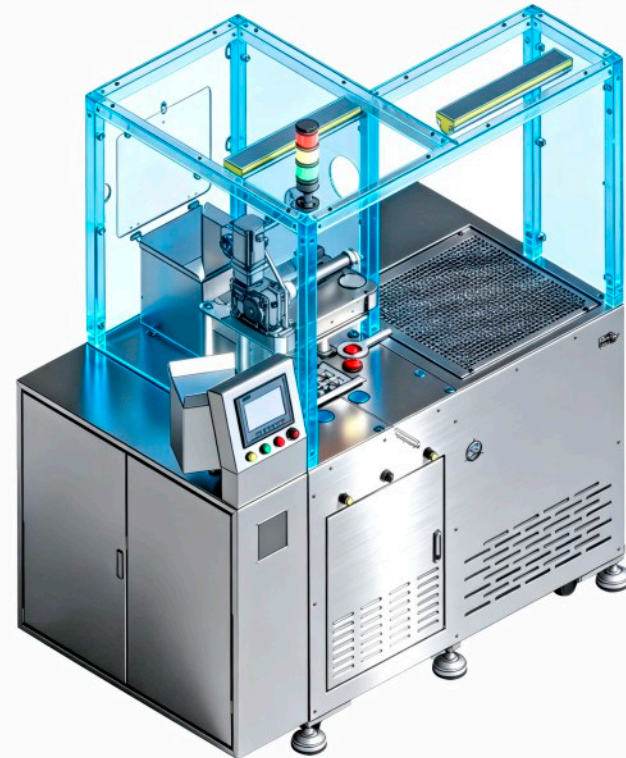
机械特点 Technical Features

- ◆外形尺寸Dimension: L3100 × W2300 × H2100
- ◆生产节拍Production capacity: 40~60pcs/min
- ◆包材直径Packaging material diameter: 35~80mm
- ◆包材高度Packaging material height: 25~60mm
- ◆功率Power: 8.5kw
- ◆电源Power supply: 380V50Hz
- ◆操作人员Operator: 1人 one person
- ◆灌装精度Filling accuracy: ± 1%

元器件信息 Key Components

- ◆PLC(可编程控制器)PLC (Programmable logic controller): Inovance
- ◆触摸屏Touch screen: Inovance
- ◆伺服电机+驱动器Servo motor + driver: Inovance
- ◆光电传感器Photoelectric sensor: Keyence
- ◆三色警示灯Three-color warning light: Onn
- ◆断路器/接触器/继电器Circuit breaker/contactor/relay: Schneider
- ◆温控器Temperature Controller: Xianda

多模式压粉机 MULTI-MODE POWDER PRESS MACHINE



功能 Function

- ◆适用产品: 干粉、高珠光粉、眼影、腮红、等多种粉质产品;
- ◆用途: 粉饼成型压制;
- ◆工序: 上粉、卷布、压制、脱模;
- ◆优势: 配有大缸径油缸, 能够满足不同粉质的工艺要求; 除了生产单色粉产品外, 还能实现拼色式多色粉压制; 利用模腔控制粉量, 克重更精准; 可实现多段式压制, 保证粉质稳定。

- ◆Applicable Product: Dry powder, high pearlescent powder, eye shadow, blush, and other powder products.
- ◆Use: Powder molding and pressing.
- ◆Production Processes: Powder, roll cloth, press, mold release.
- ◆Advantages: Equipped with a large-bore hydraulic cylinder to meet diverse powder processing requirements, the machine supports both single-color production and multi-color/mosaic pattern pressing. By utilizing mold cavity volume control for higher weight precision and multi-stage compaction to ensure stable powder quality, it delivers superior consistency and versatility.

机械特点 Technical Features

- ◆操作人员Number of operators: 1人 one people
- ◆节拍Production capacity: 1~2模/min
- ◆电源Power supply: AC 380V/50~60Hz
- ◆尺寸Size: L1826 × W1046 × H1908mm
- ◆压强Pressure intensity: 200KG/cm²
- ◆功率Power: 5.5kW

元器件信息 Key Components

- ◆步进电机Stepper motor: Leisai
- ◆液压系统Hydraulic system:
- ◆传感器Sensor: Keyence/Omron
- ◆电气元件Electrical components: SMC/Schneider
- ◆控制元件PLC Control PLC: Inovance/Siemens

散粉灌装机 LOOSE POWDER FILLING MACHINE



功能 Function

- ◆适用产品: 散粉
- ◆用途: 灌装
- ◆工序: 上料、灌装、称重、抖动
- ◆优势: 搭载实时重量反馈补偿控制系统, 针对散粉灌装全过程动态校准下料量, 保障灌装计量精度与批次一致性。

- ◆Applicable products: Loose powder
- ◆Purpose: Filling
- ◆Process: Feeding, filling, weighing, vibrating settling
- ◆Advantages: Equipped with a real-time weight feedback compensation control system, which dynamically calibrates the feeding volume throughout the loose powder filling process. It ensures high filling accuracy and consistent batch quality.

机械特点 Technical Features

- ◆外观尺寸Dimension: L1000 × W1100 × H1700mm
- ◆电源Power supply: AC380V/50
- ◆功率Power: 3KW
- ◆气压Air pressure: 0.6Mpa
- ◆节拍Production capacity: 30pcs/min
- ◆包材Packaging materials: 直径Diameter 40~90, 高度Height 15~30
- ◆操作人员Operator: 1人 One person
- ◆灌装精度Filling accuracy: ± 1%

元器件信息 Key Components

- ◆PLC(可编程控制器)PLC (Programmable logic controller): Inovance
- ◆触摸屏Touch screen: Inovance
- ◆伺服电机+驱动器Servo motor & driver: Inovance
- ◆调速电机Speed regulating motor: Jingyan
- ◆光电传感器Photoelectric sensor: Schneider
- ◆三色警示灯Three-color warning light: Schneider
- ◆断路器/接触器/继电器Circuit breaker/contactor/relay: Schneider

笔芯灌装机 PEN CORE FILLING MACHINE



功能 Function

- ◆适用产品: 眉笔、眼线笔、口红笔等笔类产品;
- ◆用途: 灌装;
- ◆工序: 料体预融、灌装;
- ◆优势: 使用活塞泵精准定量, 配合模具闷灌方式, 排气通畅, 减少气孔, 提高断力强度, 触摸屏与PLC操作系统各种参数均在人机界面, 操作便捷。

- ◆Product Application: eyebrow pencil, eyeliner, lipstick pen and other pen products .
- ◆Purpose: Filling.
- ◆Process: Material pre-fusion, filling.
- ◆Advantages: Utilizing a piston pump for precise dosing combined with a mold-submerged filling method, the machine ensures smooth venting, significantly reducing air bubbles while improving breaking strength. Equipped with a touch screen and PLC operating system, all parameters are managed through the HMI for convenient and intuitive operation.

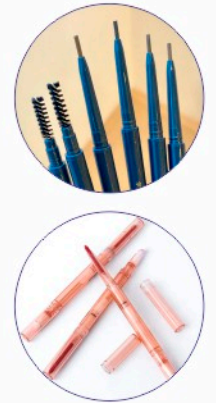
机械特点 Technical Features

- ◆操作人员Number of operators: 1人 one people
- ◆节拍Production capacity: 40pcs/min
- ◆电源Power supply: AC 220V/50-60Hz
- ◆功率Power: 2kW
- ◆气压Air pressure: 0.6Mpa
- ◆尺寸Size: L1000 x W1000 x H1800mm

元器件信息 Key Components

- ◆电气元件Electrical components: SMC/Schneider
- ◆控制元件PLC Control PLC: Inovance

套笔帽机 PEN CAP MACHINE



功能 Function

- ◆适用产品: 眉笔、口红笔等笔类产品;
- ◆用途: 笔帽组装;
- ◆工序: 自动供料、自动取料、自动套盖、成品取出;
- ◆优势: V型输送带定位槽兼容性更强, 定位更精准; 效率高, 可联机使用。

- ◆Applicable products: Eyebrow pencils, lipstick pencils, and other pen-type products.
- ◆Use: Pen cap assembly.
- ◆Process: Automatic feeding, automatic picking, automatic capping, and finished product discharge.
- ◆Advantages: V-belt positioning groove has stronger compatibility and more accurate positioning; high efficiency, can be used online.

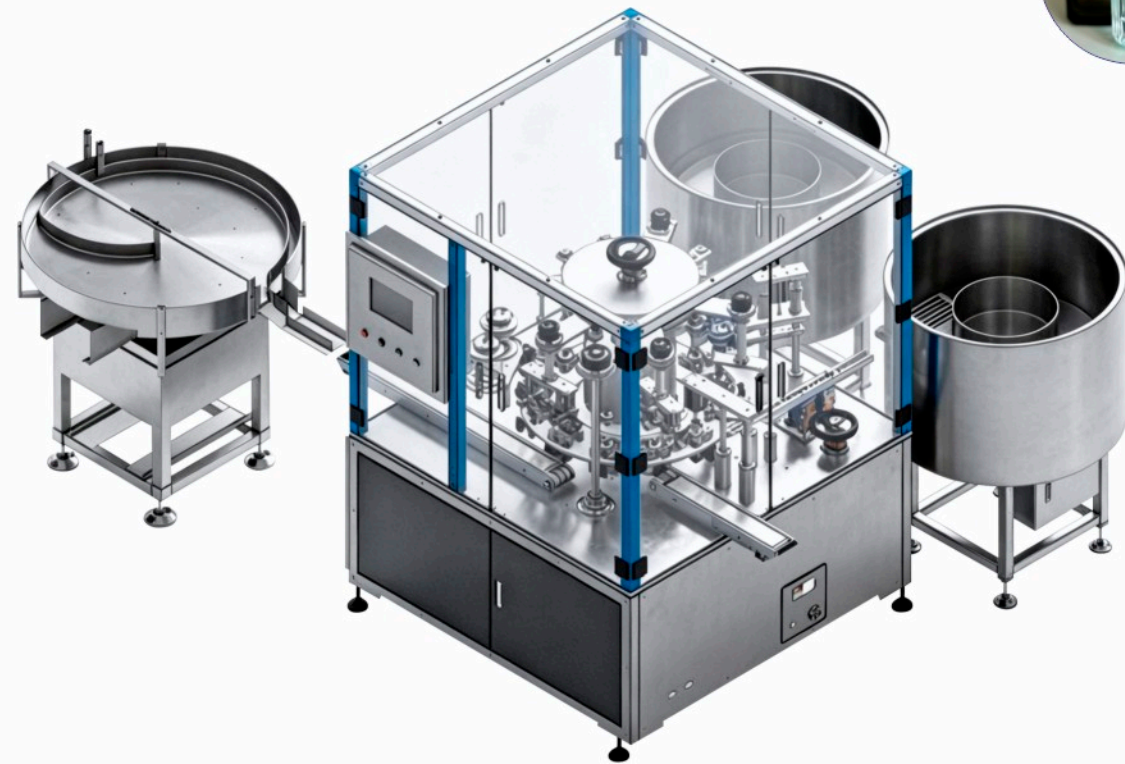
机械特点 Technical Features

- ◆操作人员Number of operators: 1人 one people
- ◆节拍Production capacity: 40-46pcs/min
- ◆电源Power supply: AC 220V
- ◆功率Power: 3kW
- ◆气压air pressure: 0.6Mpa
- ◆尺寸Size: L1300 x W920 x H1720mm
- ◆兼容笔杆尺寸Compatible pen shaft size: 直径Diameter 6.5-11, 长度Length 90-170mm

元器件信息 Key Components

- ◆伺服电机 Servo motor: Inovance
- ◆调速电机Speed control motor: Jingyan
- ◆传感器Sensor: Keyence
- ◆电气元件Electrical components: SMC/Schneider Electric/Airtac
- ◆控制元件PLC Control PLC: Inovance

香水灌装机 PERFUME FILLING MACHINE



功能 Function

- ◆适用产品: 香水
- ◆用途: 香水灌装, 喷头中套组装
- ◆工序: 进料、灌装、喷头组装、中套组装、出料
- ◆优势: 1人操作, 整机快速换产设计, 兼容性好, 适合方瓶、圆瓶、异形瓶等不同瓶型生产。

- ◆Applicable products: Perfume
- ◆Purpose: Perfume filling, spray cap & middle sleeve assembly
- ◆Process: Bottle feeding, filling, spray head assembly, middle sleeve assembly, discharging
- ◆Advantages: Single-operator operation. The machine adopts a quick product changeover design with strong compatibility, suitable for the production of square bottles, round bottles, special-shaped bottles and other container types.

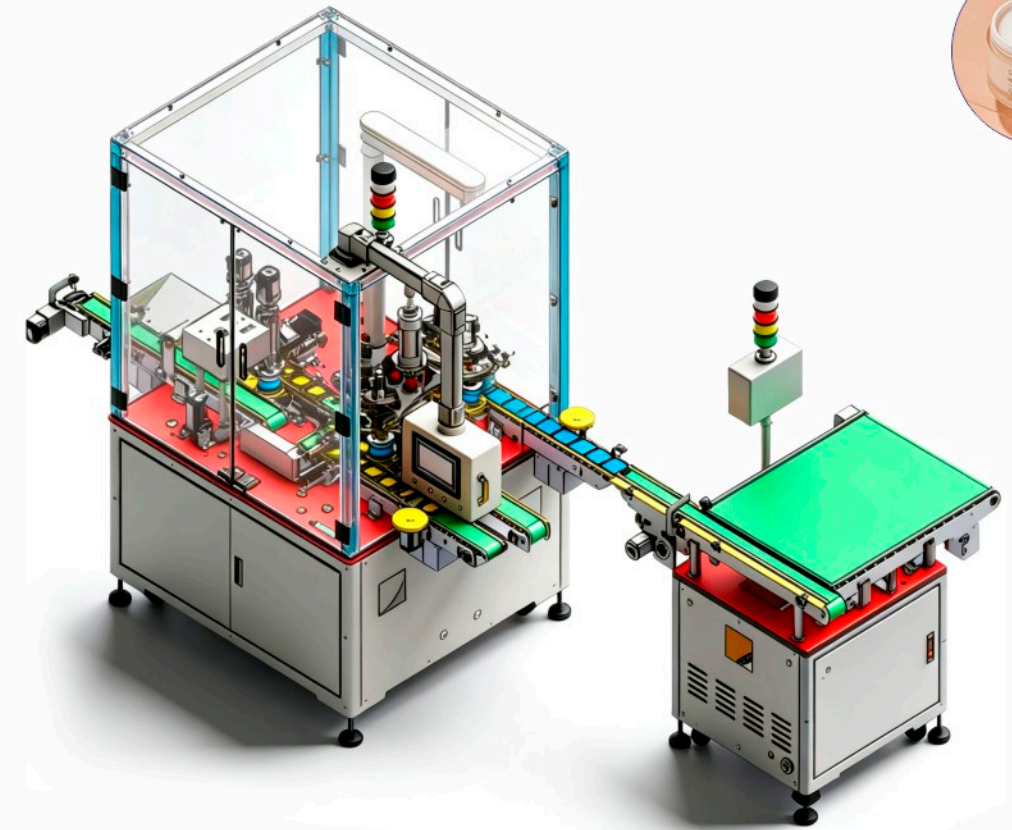
机械特点 Technical Features

- ◆外形尺寸Dimension: L3200 × W2450 × H1800
- ◆生产节拍Production capacity: 20~30 pcs/min
- ◆灌装方式Filling Mode: 等液位灌装Constant liquid level filling
- ◆包材直径Packaging material diameter: 30~70mm (圆瓶或方瓶Round or square bottles)
- ◆包材高度Packaging material Height: 小于150mm Less than 150mm
- ◆功率Power: 3KW, 380V/50Hz

元器件信息 Key Components

- ◆PLC(可编程控制器)PLC (Programmable logic controller): Inovance
- ◆触摸屏Touch screen: Inovance
- ◆变频器Inverter: Inovance
- ◆光电传感器Photoelectric sensor: Keyence
- ◆三色警示灯Three-color warning light: Onn
- ◆断路器/接触器/继电器Circuit breaker/contactor/relay: Schneider

自动旋盖机 AUTOMATIC CAPPING MACHINE



功能 Function

- ◆适用产品: 各类广口瓶
- ◆用途: 广口瓶旋盖
- ◆工序: 自动供盖、预旋、终旋、自动不良剔除
- ◆优势: 解决了广口瓶旋口、螺牙划伤、扭力不均匀的核心痛点

- ◆Product Application: Various wide-mouth bottles
- ◆Use: Screwing the caps of wide-mouth bottles
- ◆Process: Automatic cap feeding, pre-screwing, final tightening, and automatic reject sorting
- ◆Advantages: Solves the core pain points of wide-mouth bottle screwing, thread scratches, and uneven torque

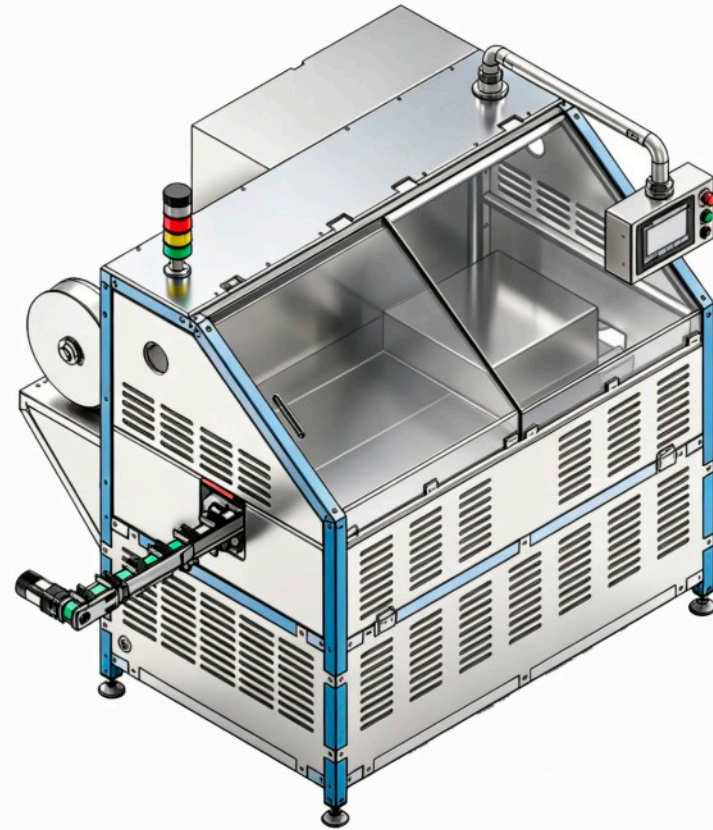
机械特点 Technical Features

- ◆双头旋盖 Double-headed screw cap
- ◆操作人员Machine operator: 1人 one people
- ◆节拍Production capacity: 40~42pcs/min
- ◆电源Power supply: 220V50Hz
- ◆尺寸Size: L4000 × W1650 × H1650mm, 台面高度750mm
- ◆功率Power: 3kW
- ◆气压Air pressure: 0.6Mpa

元器件信息 Key Components

- ◆步进电机Stepper motor: Leisai
- ◆传感器Sensor: Keenzee
- ◆电气原件Electrical originals: SMC, Schneider, Yadke
- ◆控制元件PLC Control PLC: Inovance
- ◆伺服电机Servo motor: Inovance

自动套膜机 AUTOMATIC SLEEVING MACHINE



功能 Function

- ◆适用产品: 各种圆形/方形口红/眉笔类产品
- ◆用途: 产品套膜
- ◆工序: 人工放管, 自动套膜, 自动切膜, 自动热收缩
- ◆优势: 可任意调整切膜尺寸; 成品外观平整, 无褶皱

- ◆Applicable products: Various round/square lipstick/eyebrow pencil products
- ◆Purpose: product film wrapping
- ◆Process: manual tube placement, automatic film wrapping, automatic film cutting, automatic thermal shrinking
- ◆Advantages: The cutting film size can be adjusted arbitrarily; The finished product has a smooth appearance without wrinkles.

机械特点 Technical Features

- ◆操作人员Number of operators: 1人 one people
- ◆节拍Production capacity: 40-45pcs/min
- ◆电源Power supply: 220V50Hz
- ◆尺寸Size: L2000 × W1400 × H1600mm
- ◆功率Power: 4.5kW
- ◆气压Air pressure: 0.6Mpa

元器件信息 Key Components

- ◆伺服电机Servo motor: Inovance
- ◆调速电机Speed control motor: Jingyan
- ◆双向喷气式收缩机Bidirectional jet shrinker: Domestic satsuki
- ◆光纤传感器Fiber optical sensor: Omron
- ◆电气元件Electrical components: SMC/Schneider Electric/Airtac
- ◆控制元件PLC Control PLC: Inovance

铝箔封口机 ALUMINUM FOIL SEALING MACHINE



功能 Function

- ◆适用产品: 各类铝箔片封口产品
- ◆用途: 铝箔封口
- ◆工序: 自动供料, 自动取铝箔, 自动烫压, 成品取出
- ◆优势: 柔性高, 适用性广, CNC高精度加工, 可调节烫头温度及烫压时间, 保证密封性的同时避免铝箔表面烫伤, 溢胶。

- ◆Applicable products: Various types of aluminum foil sealing products
- ◆Purpose: Aluminum foil sealing
- ◆Process: Automatic feeding, automatic aluminum foil retrieval, automatic hot pressing, finished product retrieval
- ◆Advantages: High flexibility, wide applicability, CNC high-precision machining, adjustable hot head temperature and hot pressing time, ensuring sealing while avoiding aluminum foil surface burns and glue overflow

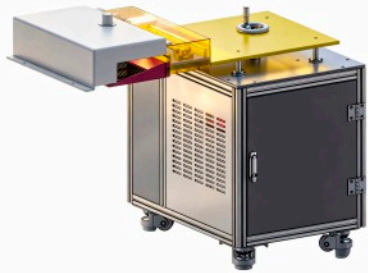
机械特点 Technical Features

- ◆四头封口Four head sealing
- ◆操作人员Number of operators: 1人 one people
- ◆节拍Production capacity: 26-30pcs/min
- ◆电源Power supply: 220V/50Hz
- ◆功率Power: 3kW
- ◆气压Air pressure: 0.6Mpa
- ◆尺寸Size: L1000 × W900 × H1700mm

元器件信息 Key Components

- ◆伺服电机Servo motor: Inovance
- ◆人机交互触摸屏HMI touchscreen: 10-inch Inovance
- ◆调速器Speed control motor: Taibang
- ◆传感器Sensor: Omron
- ◆电气元件Electrical components: Schneider
- ◆控制元件PLC Control PLC: Inovance

小单机设备系列 SMALL SINGLE EQUIPMENT SERIES



在线静电除尘设备
Online electrostatic precipitator



标签回卷机
Label rewinder



粉饼色彩打印机
Powder pattern printer



口红喷珠光机
Lipstick pearl spraying machine



卷包芯墨水灌装机
Roll core ink filling machine



笔芯挤出机
Pencil core extruder

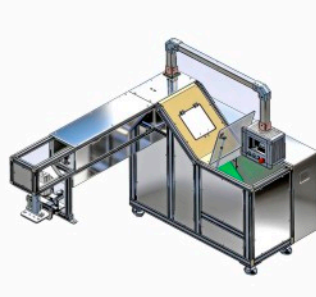


在线镜盒点胶机
Online mirror box dispensing machine

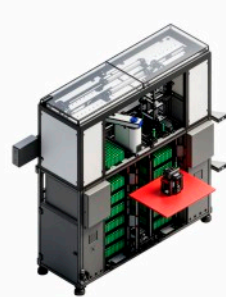
自动化供料岛系列 AUTOMATED FEEDING ISLAND SERIES



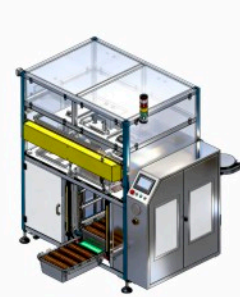
自动化供料设备系列
Automatic feeding equipment series



自动化供料设备系列
Automatic feeding equipment series



自动化供料设备系列
Automatic feeding equipment series



自动化供料设备系列
Automatic feeding equipment series

实验室设备 LABORATORY EQUIPMENT



压粉打样机
Pressed powder proofing machine



粉饼跌落测试台
Powder drop test bench



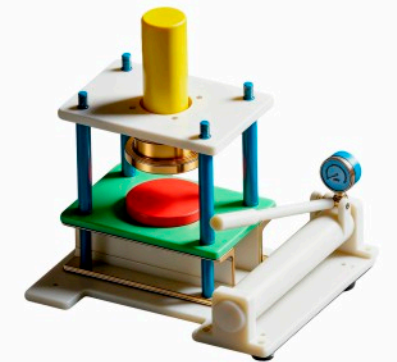
口红跌落测试机
Lipstick drop testing machine



镜盒跌落测试机
Mirror box drop test machine



湿粉压粉机
Wet powder pressing machine



半自动干粉打样机
Semi-automatic dry powder proofing machine



软管压爆测试机
Hose pressure explosion testing machine



高速粉碎机
High speed grinder

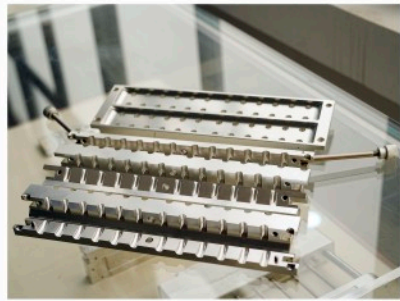


口红软模脱模机
Lipstick soft mold stripping machine

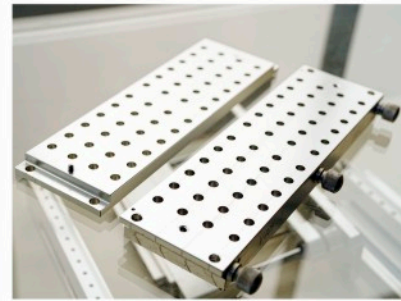
口红模具 LIPSTICK MOLD



口红正灌模具
Lipstick filling mold



48穴口红模具
48-Hole lipstick mold



48穴口红模具
48-Hole lipstick mold



正灌口红模具
Top-filling lipstick mold



背灌口红模具
Back-filling lipstick mold



双色口红模具
Dual-color lipstick mold



六穴金属模具
6-Cavity metal mold

硅胶模具 SILICONE MOLD



粉类硅胶模具
Powder silicone mold



全硅胶口红模具
Full silicone lipstick mold



半硅胶口红模具
Semi silicone lipstick mold

压粉模具 POWDER PRESSING MOLD



多色压粉模具
Multi-color powder pressing mold



双色压粉模具
Dual-color powder pressing mold



手工压粉模具
Manual powder pressing mold



压粉模具-花纹铜片
Powder pressing mold - embossed copper plate

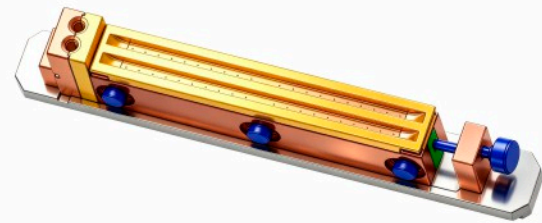
笔类模具
PENCIL MOLD



直灌眉笔模具
Direct-filling eyebrow pencil mold



40-穴眉笔模具
40-Cavity eyebrow pencil mold



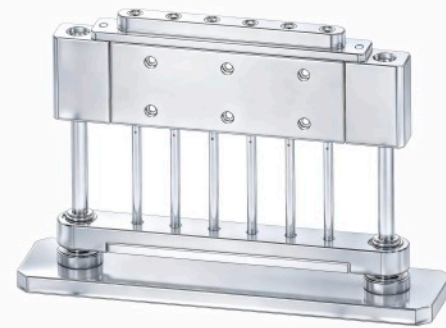
背灌眉笔模具
Back-filling eyebrow pencil mold



自动机模具
Automatic machine mold



眉笔入芯治具
Eyebrow pencil core-insertion fixture



成型入芯一体模具
Integrated molding & core-insertion mold

合作客户
OUR CUSTOMERS

用科技妆点美 (When technology meets beauty)这一Slogan体现了乐虹科技核心理念：以人为本，创新驱动，快速响应。我们以此三大要素为行动指南，持续推动美妆行业的智能化发展，致力于成为全球美妆智造领域的领航者。

The slogan "When technology meets beauty" embodies the core philosophy of Lerouge Technology: people-oriented, innovation-driven, and quick response. We use these three elements as a guide to action, continue to promote the intelligent development of the beauty industry, and are committed to becoming a leader in the global intelligent manufacturing field of beauty.